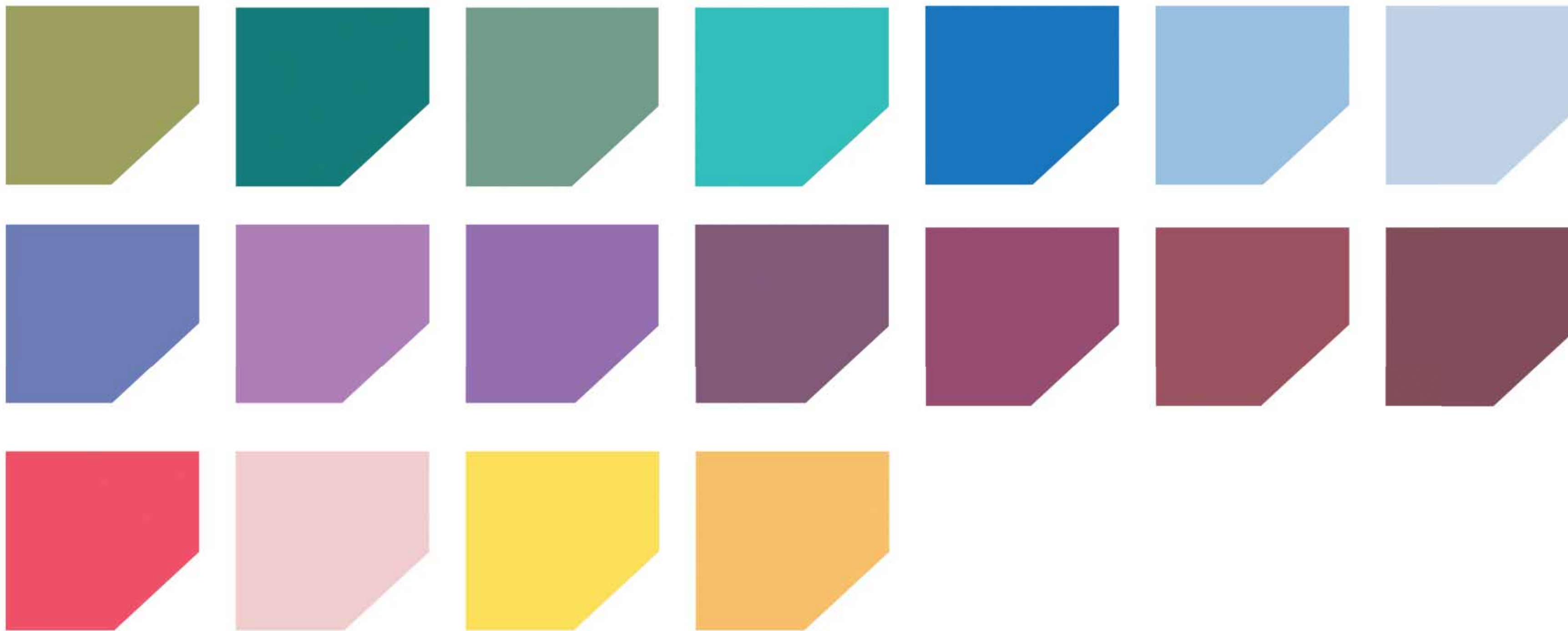


Chemeketa 2016 Visual Communications **PORTFOLIO SHOW**

GAMUT, WE'RE GOOD









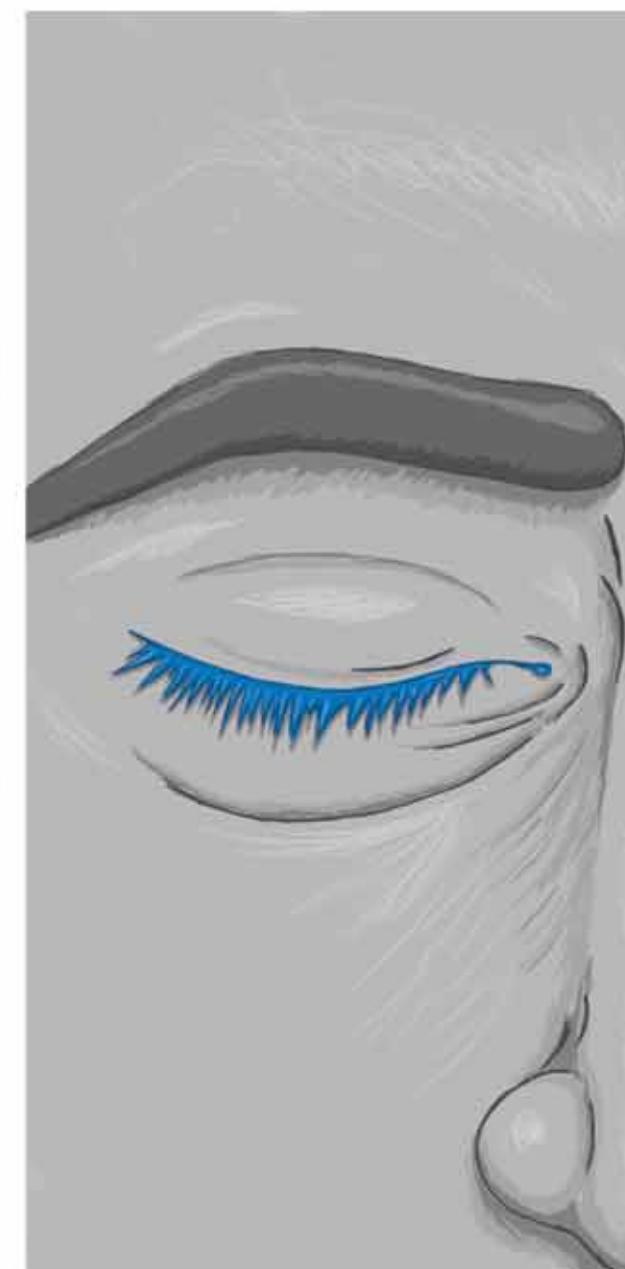
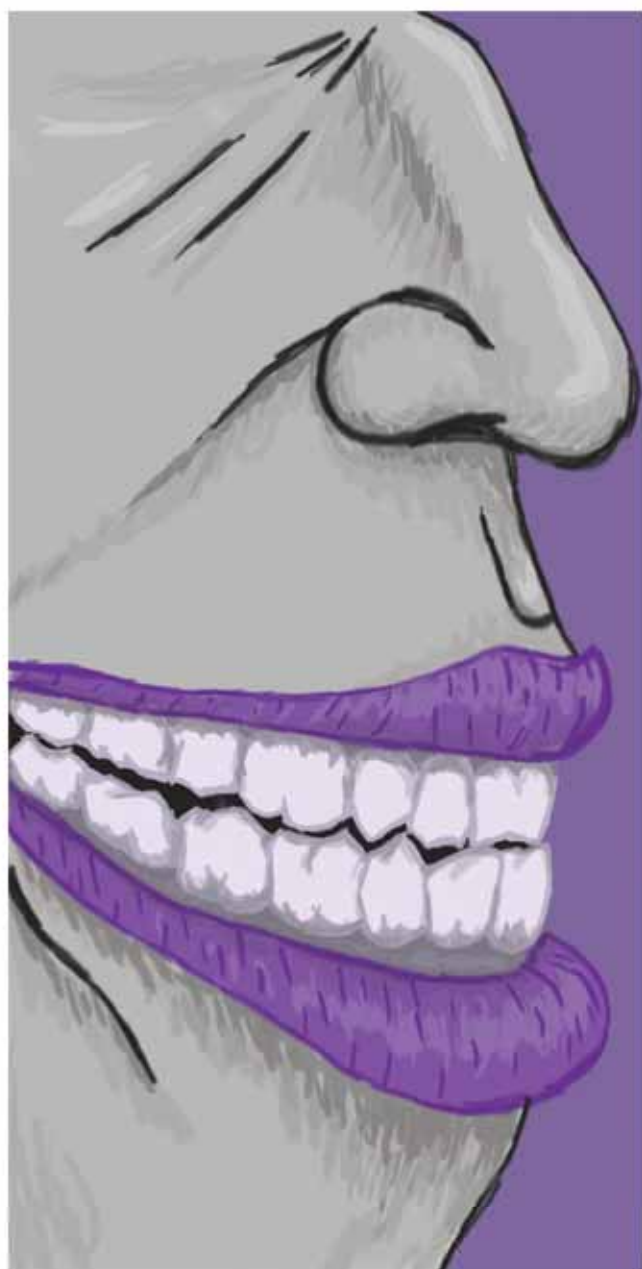






Creative Juice
Company





CHERNI CREATIVE



CHERNI CREATIVE

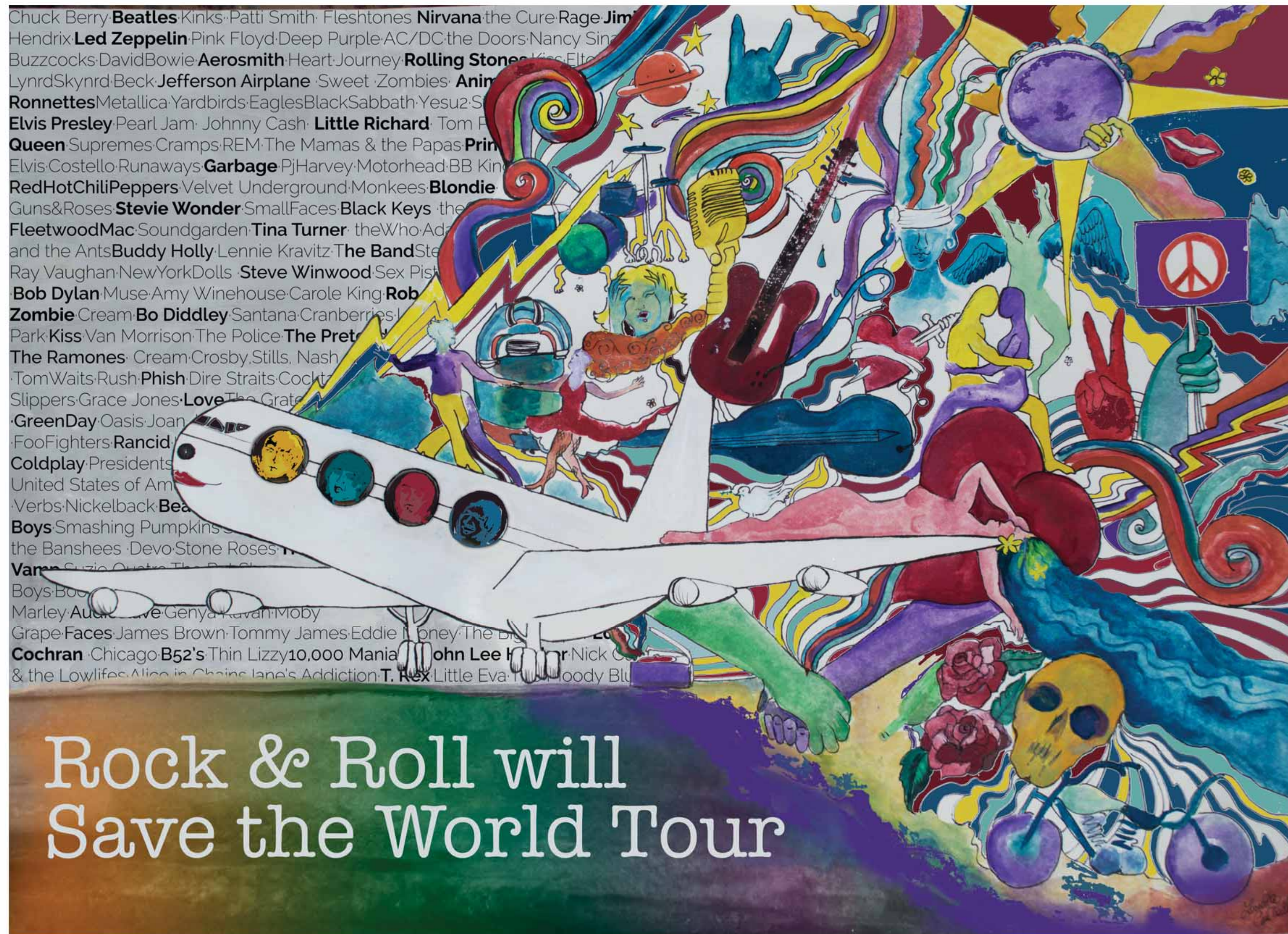


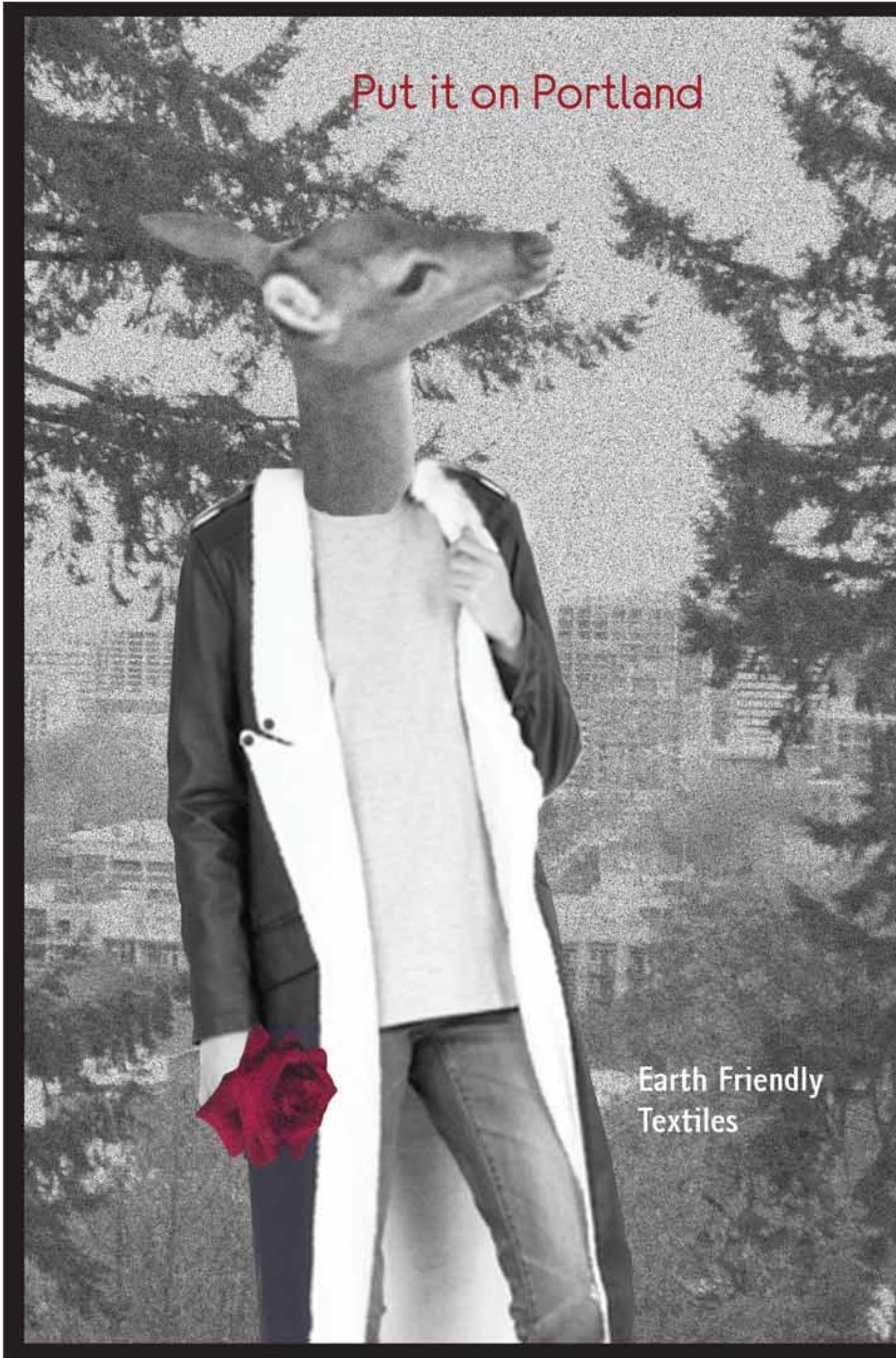
CHERNI CREATIVE



COSTELLO PICTURES :A BRET MALLEY *CATHIA REED BASED ON THE NOVEL BY CHRISTINE LINDER "THE WITCHING" CASTING BY PETER HOELTER
MUSIC BY JULIAN HARKEMA COSTUME DESIGNER ALISON PORTER EDITOR NOAH PFARR PRODUCTION DESIGNER KRISTIN MACDONALD GUEST DIRECTOR SUSANNE TRINGALI
CO-PRODUCED BY PETER DIBBLE BASED ON THE NOVEL BY STEVE RICHARDSON DIRECTOR OF PHOTOGRAPHY ALEX SOLOMON EXECUTIVE PRODUCER KAY BOEHMER







ED BENEDICT

SKATE PLAZA

ARTICLE AND PHOTOS BY - BRODY DORAN

SAVING THE WORLD — ONE RAINDROP AT A TIME

Everyone now-a-days is making the jump to being green. In this day and age it's cool to care about the planet. Being conscious of our natural resources and looking for ways to give back are just some of the ways that we can help. What if you want to help on a larger scale though? That's exactly what New Line Skateparks(NLS) had in mind when asked to design the new Ed Benedict Skate Plaza. Based around the idea of "kids getting mad at the rain because the skatepark is wet"; NLS wanted to make the rain a good thing. Designed by NLS and created by California Skateparks, Ed Benedict Plaza was born.

A plaza is a open, park-style environment made for skating, but it has benches, tables, a nice view; making it ideal for family outings. Ed Benedict skate plaza is built around natural elements like trees and plants, reducing the use of man-made materials. Dan Garland designed several skateable art obstacles under the concept, "Tread Lightly." The plaza has two major bio-

filtration islands that reuse rainwater. The design also includes storm water treatment features incorporated as gaps. The plaza is built so all the rainwater is collected into drains and recycled for natural elements.

Collecting rainwater was just the tip of the iceberg for NLS. The Ed Benedict skate plaza is sustainable in the following ways: uses recycled crushed concrete for a base rock under the concrete, uses locally produced and/or manufactured materials, preserves all existing trees in the area, and uses progressive and environmentally sensitive site development techniques. Most importantly, Portland, Oregon is now home to the first environmentally sensitive, skateable plaza in the United States.

The plaza has the "TL" cutout, which stands for Tread Lightly. Tread Lightly is a movement sweeping through the Pacific Northwest with a goal of "protecting and enhancing recreational access and opportunities by promoting outdoor ethics to heighten individuals' sense of good



stewardship" (treadlightly.org). Tread Lightly is attempting to keep our carbon footprint as small as possible. Once again, caring about the planet is a very cool thing.

PORTLAND, OREGON IS NOW HOME TO THE FIRST ENVIRONMENTALLY SENSITIVE, SKATEABLE PLAZA IN THE UNITED STATES.

Aside from all the ways the plaza is creating sustainability, the skate plaza is also known for being a great place for beginners to learn how to skateboard. In one corner of the plaza sits a half pipe with pool coping. There are two sets of stairs with rails and ledges on both sides. One has four steps, while the other has three steps, making it fun for all types of skaters.

The plaza has two cutouts, one is the TL, the other is a raindrop. The plaza is filled with ledges and banks in every corner and a snakerun around the outside of the skatepark. A snakerun is essentially a trail of concrete facing downhill. Skaters often see how fast they can go while avoiding all the obstacles in the way, such as rails or a small manual box. Beginner, amateur, or professional, this park is made for everyone.

Ed Benedict Skate Plaza is located at Ed Benedict Park at 109th St and SE Powell Blvd. It's open to the public and kids of all ages. Skateboards, BMX bikes, and Rollerblades are all allowed. If hitting the plaza isn't your thing, the plaza is built inside of Ed Benedict Park. Not only is this a great place to go and shred the plaza, but it's a great place for family outings. Inside the park is a basketball court and a soccer field. So pack a lunch, grab your board, and hit the plaza for a day full of fun.







Steeped Remedies

a guide for medicinal teas

Written by Stephanie Tourles Mother Earth News
Photograph by Heather Doré

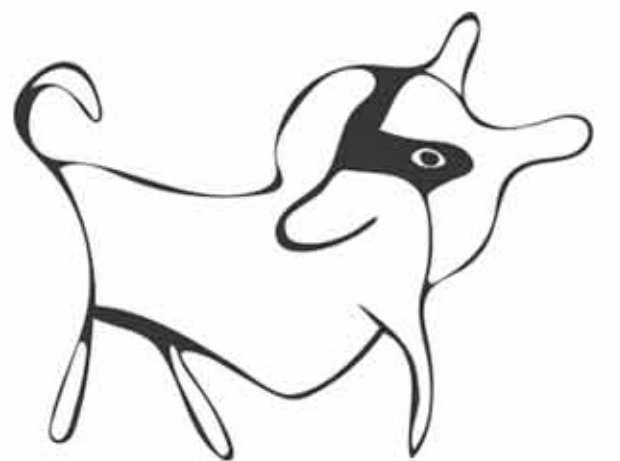
When you're sick, little is more comforting than holding a steaming mug of fragrant tea in both hands, warming your face with the hot steam. Somehow, no matter how rotten you felt before, you instantly feel just a tiny bit better. Whether you are lucky enough to grow your own tea herbs, purchase loose teas, or use tea bags, your cabinet is not complete without the following ingredients. These teas are delicious and beneficial, with many different healing qualities.

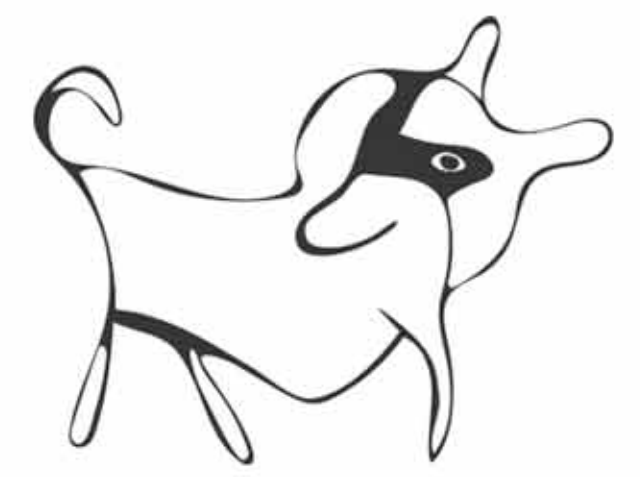
Considering that we most often turn to herbal teas for healing purposes, it's especially important to purchase or grow organic herbs for this purpose. If your leaves are bathed in pesticide and then you add them to boiling water, instead of healing goodness, you are steeping toxins. When making tea for medicinal purposes, be sure to steep the tea in a teapot with a lid, or to cover your mug while the herbs are steeping. This helps to make a more potent brew by keeping all of the healing oils in the tea, instead of allowing them to drift into the room. Most herbs should be steeped

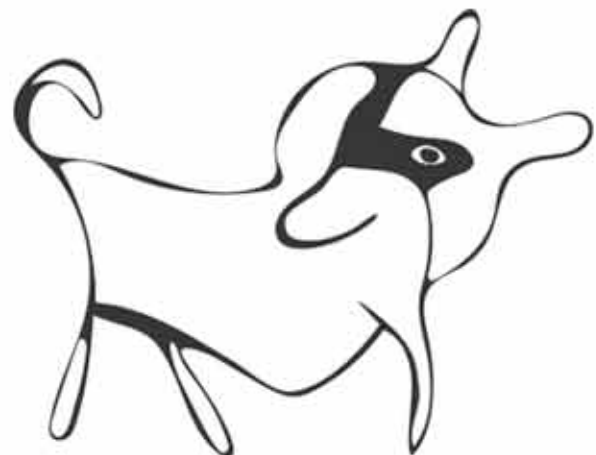
for about 10 minutes for maximum results. There are many different herbs from around the world that have wonderful healing properties.

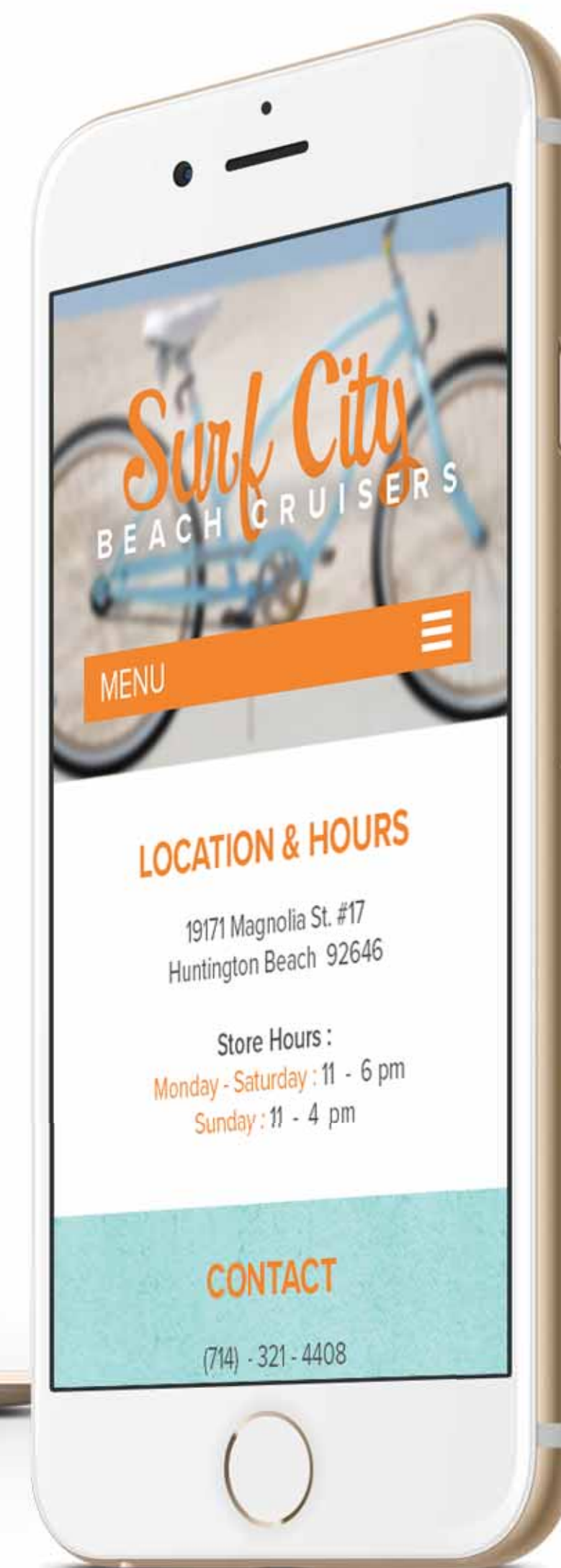
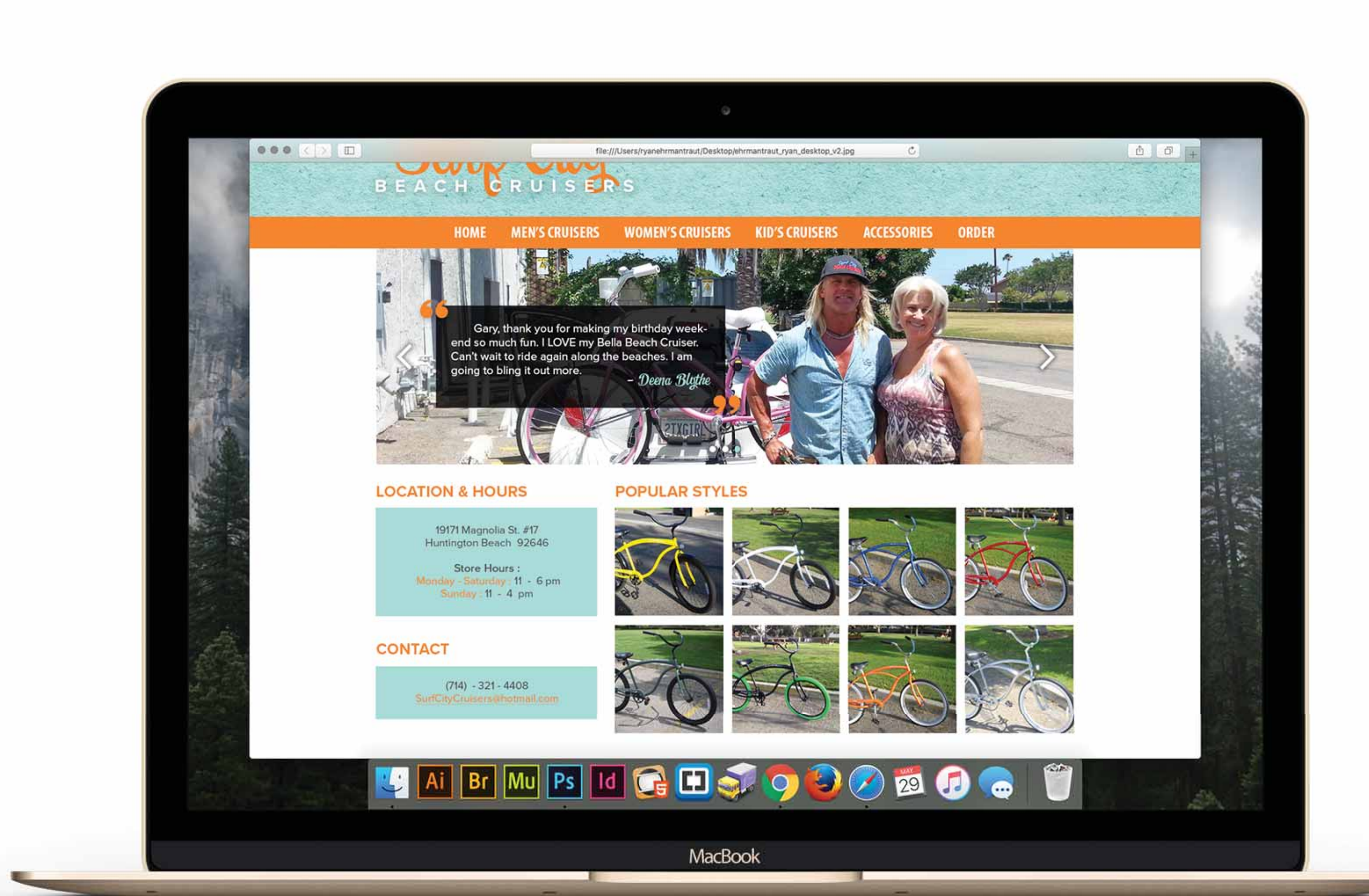
I've concentrated this list on herbs that can either be easily acquired or stored, and that can be easily grown in a backyard garden or a sunny window. Just like Band-Aids, antibiotic cream, or aspirin, these items are vital additions to your pantry, allowing you to dispense a hot, steaming, and fragrant cup of nurturing in as little time as it takes you to boil water. Be prepared by keeping the following ingredients close at hand, and be self-sufficient by growing as many as possible, which is always the best way to make sure that the items were grown using safe, organic methods. The handy thing about tea bags is that you can carry a little medicine cabinet with you in your bag or everyday carrying kit that takes up a very small amount of space. You only need your favorite cup and boiling water to access the healing powers of the herbs.

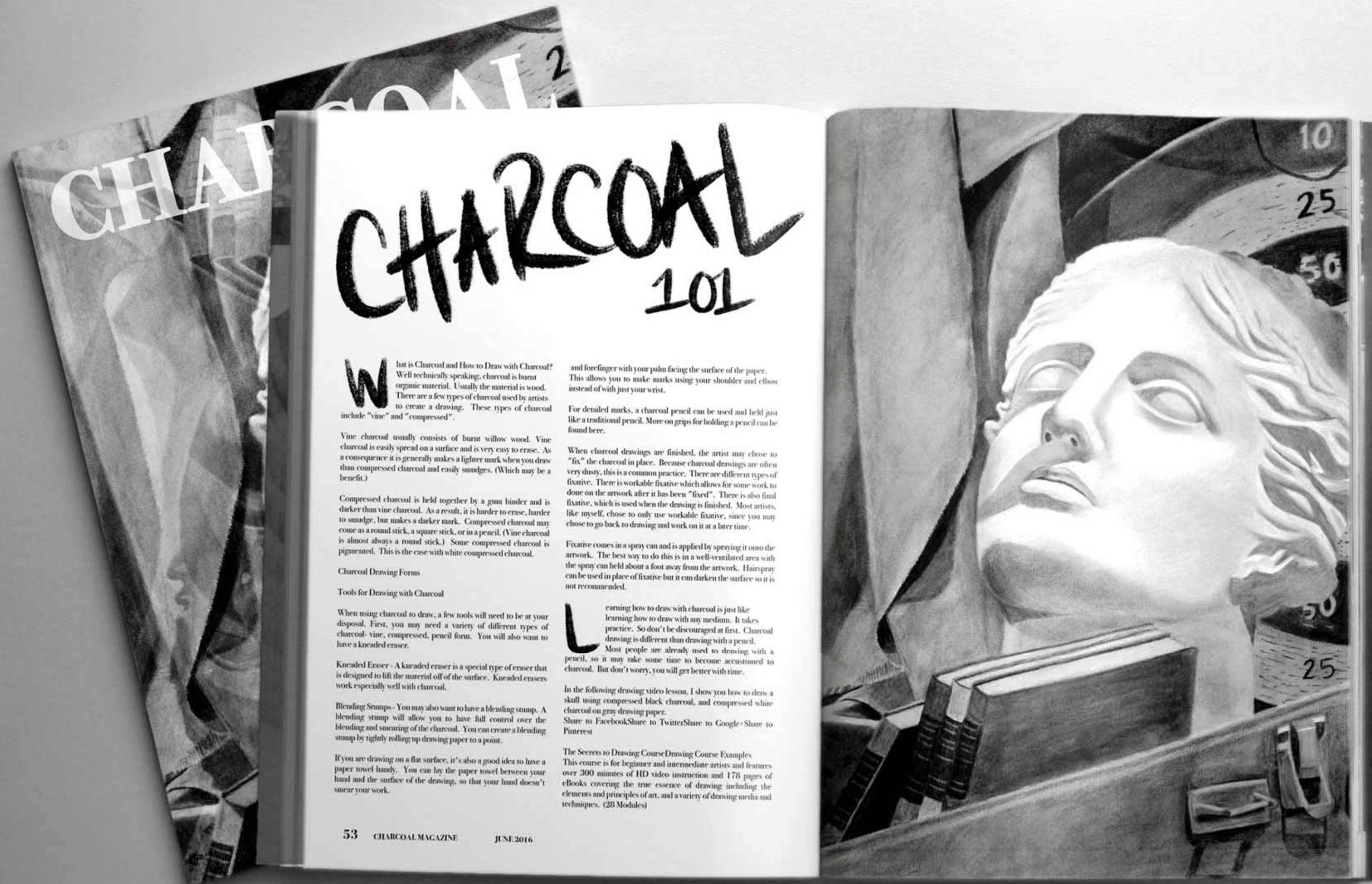
Continue on next page...











CHARCOAL 101

What is Charcoal and How to Draw with Charcoal? Well technically speaking, charcoal is burnt organic material. Usually the material is wood. There are a few types of charcoal used by artists to create a drawing. These types of charcoal include "vine" and "compressed".

Vine charcoal usually consists of burnt willow wood. Vine charcoal is easily spread on a surface and is very easy to erase. As a consequence it is generally makes a lighter mark when you draw than compressed charcoal and easily smudges. (Which may be a benefit.)

Compressed charcoal is held together by a gum binder and is darker than vine charcoal. As a result, it is harder to erase, harder to smudge, but makes a darker mark. Compressed charcoal may come as a round stick, a square stick, or in a pencil. (Vine charcoal is almost always a round stick.) Some compressed charcoal is pigmented. This is the case with white compressed charcoal.

Charcoal Drawing Forms

Tools for Drawing with Charcoal

When using charcoal to draw, a few tools will need to be at your disposal. First, you may need a variety of different types of charcoal- vine, compressed, pencil form. You will also want to have a kneaded eraser.

Kneaded Eraser- A kneaded eraser is a special type of eraser that is designed to lift the material off of the surface. Kneaded erasers work especially well with charcoal.

Blending Stumps- You may also want to have a blending stump. A blending stump will allow you to have full control over the blending and smearing of the charcoal. You can create a blending stump by tightly rolling up drawing paper to a point.

If you are drawing on a flat surface, it's also a good idea to have a paper towel handy. You can lay the paper towel between your hand and the surface of the drawing, so that your hand doesn't smear your work.

and forefinger with your palm facing the surface of the paper. This allows you to make marks using your shoulder and elbow instead of with just your wrist.

For detailed marks, a charcoal pencil can be used and held just like a traditional pencil. More on grips for holding a pencil can be found here.

When charcoal drawings are finished, the artist may chose to "fix" the charcoal in place. Because charcoal drawings are often very dusty, this is a common practice. There are different types of fixative. There is workable fixative which allows for some work to be done on the artwork after it has been "fixed". There is also final fixative, which is used when the drawing is finished. Most artists, like myself, chose to only use workable fixative, since you may chose to go back to drawing and work on it at a later time.

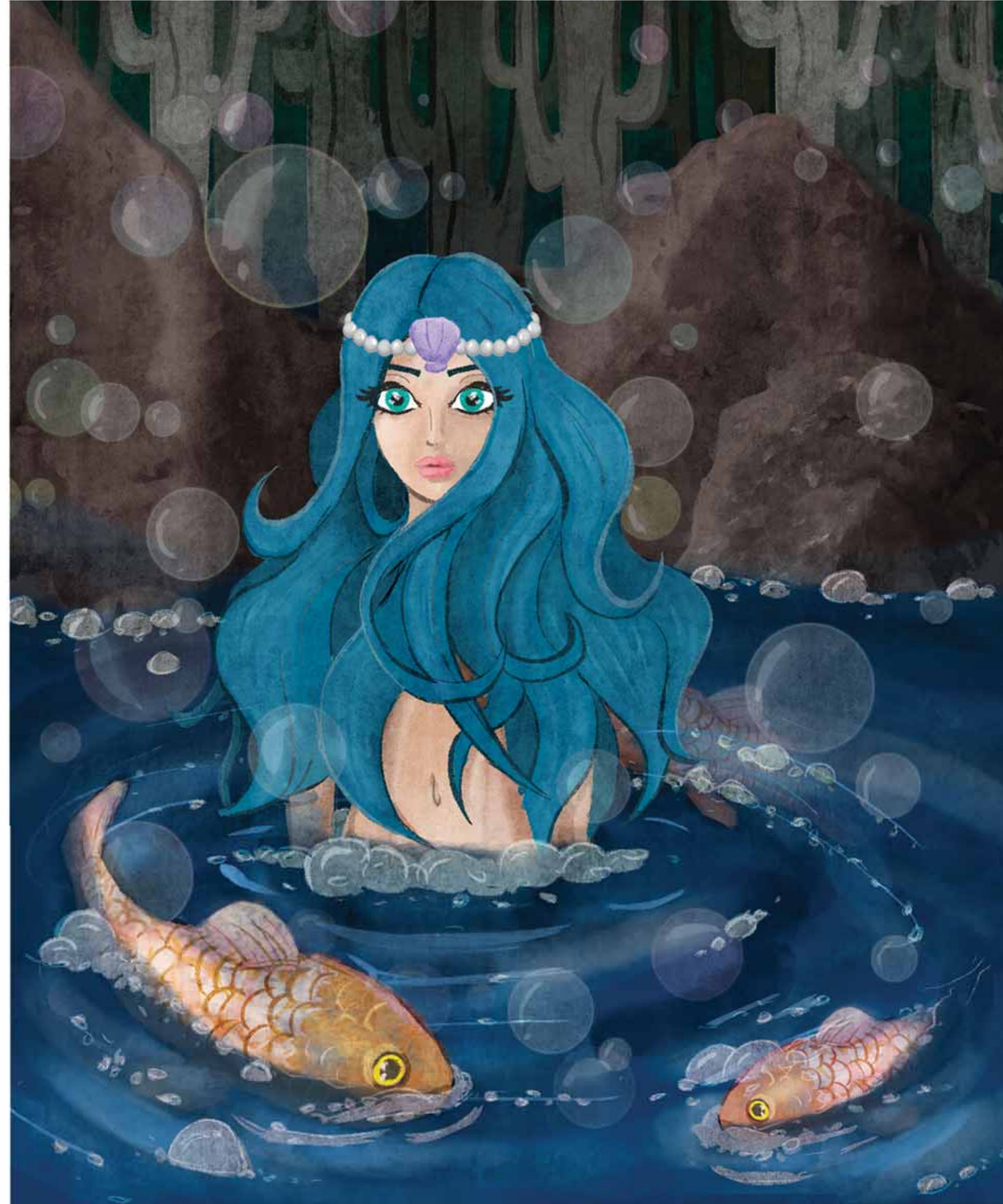
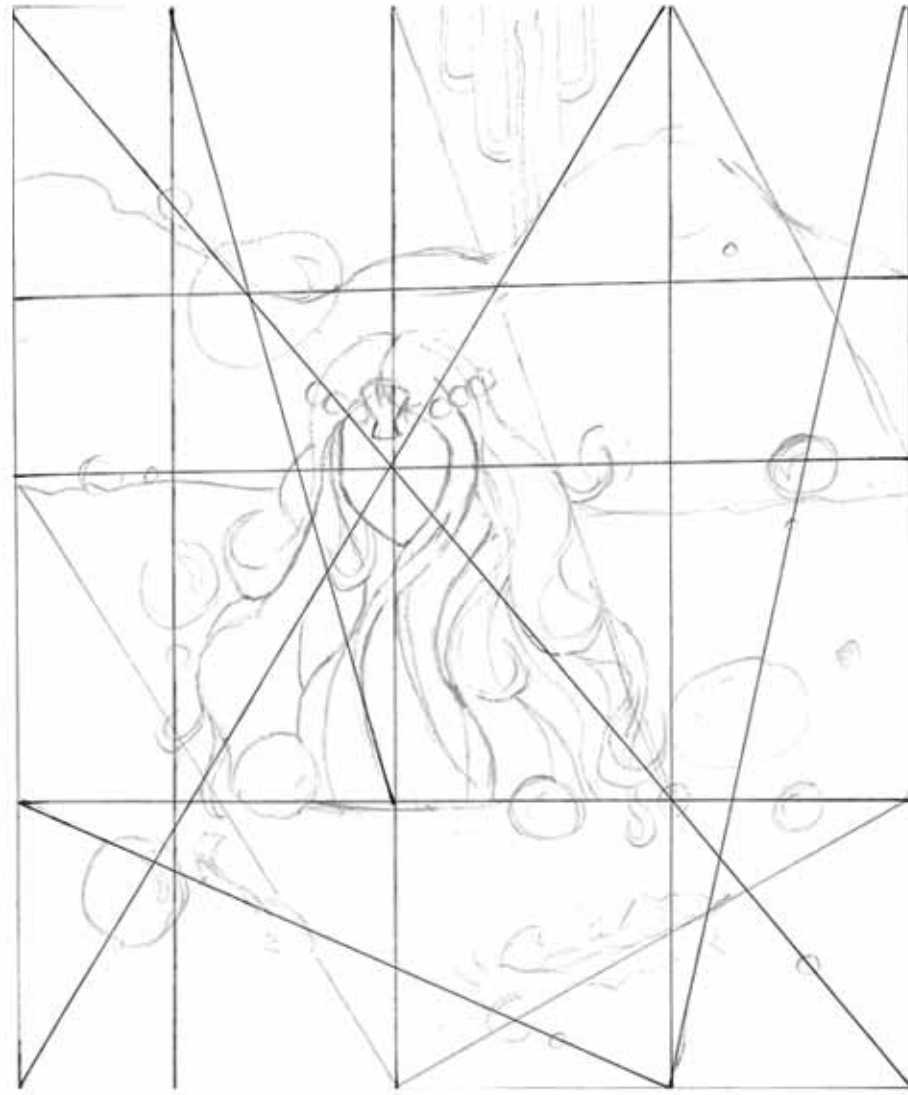
Fixative comes in a spray can and is applied by spraying it onto the artwork. The best way to do this is in a well-ventilated area with the spray can held about a foot away from the artwork. Hairspray can be used in place of fixative but it can darken the surface so it is not recommended.

Learning how to draw with charcoal is just like learning how to draw with any medium. It takes practice. So don't be discouraged at first. Charcoal drawing is different than drawing with a pencil. Most people are already used to drawing with a pencil, so it may take some time to become accustomed to charcoal. But don't worry, you will get better with time.

In the following drawing video lesson, I show you how to draw a skull using compressed black charcoal, and compressed white charcoal on gray drawing paper. Share to FacebookShare to TwitterShare to Google+Share to Pinterest

The Secrets to Drawing CourseDrawing Course Examples This course is for beginner and intermediate artists and features over 300 minutes of HD video instruction and 178 pages of eBooks covering the true essence of drawing including the elements and principles of art, and a variety of drawing media and techniques. (28 Modules)











The Enchanted



Rene Denfeld



STORM
IN A CUP



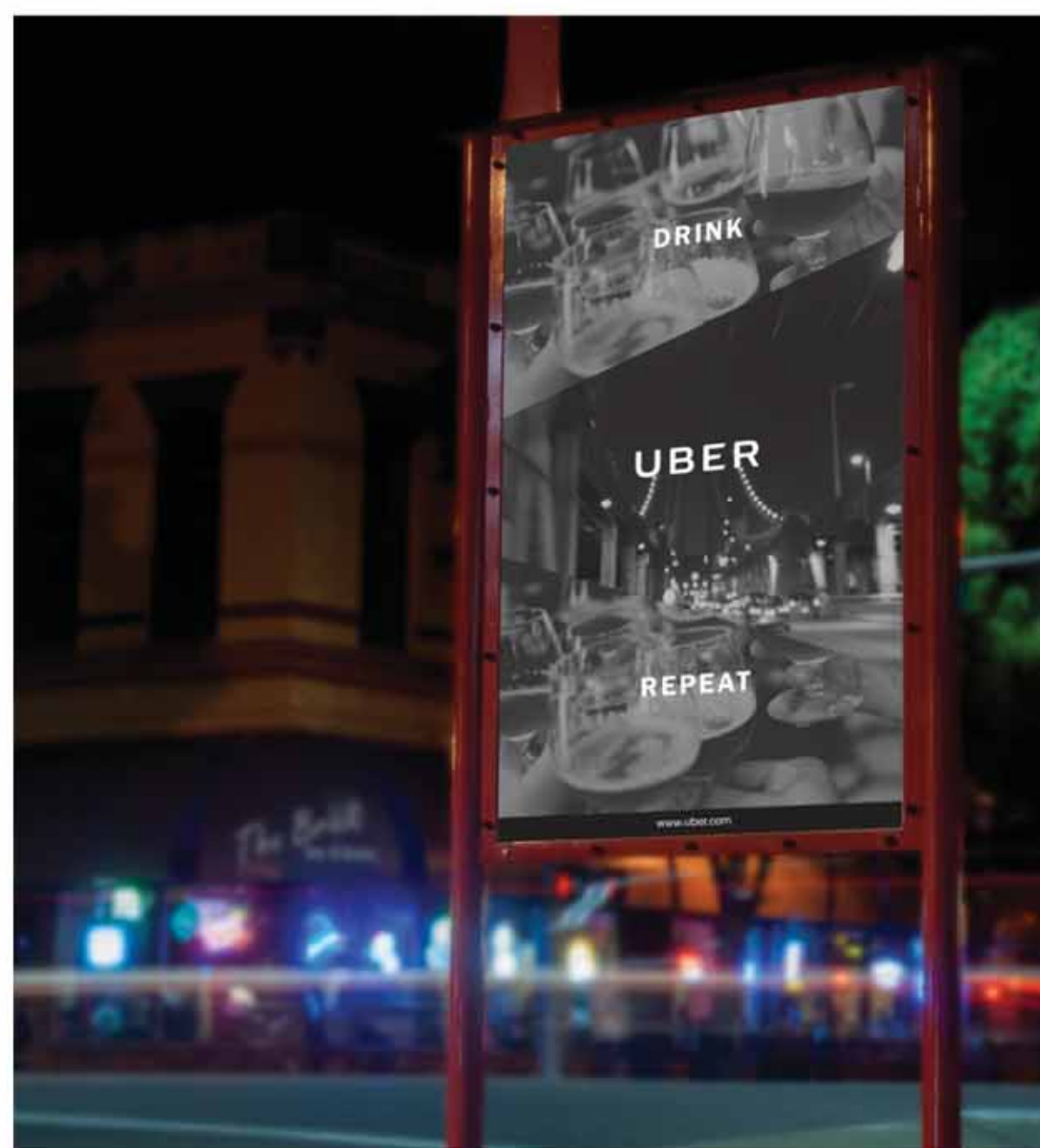


MANZANITA

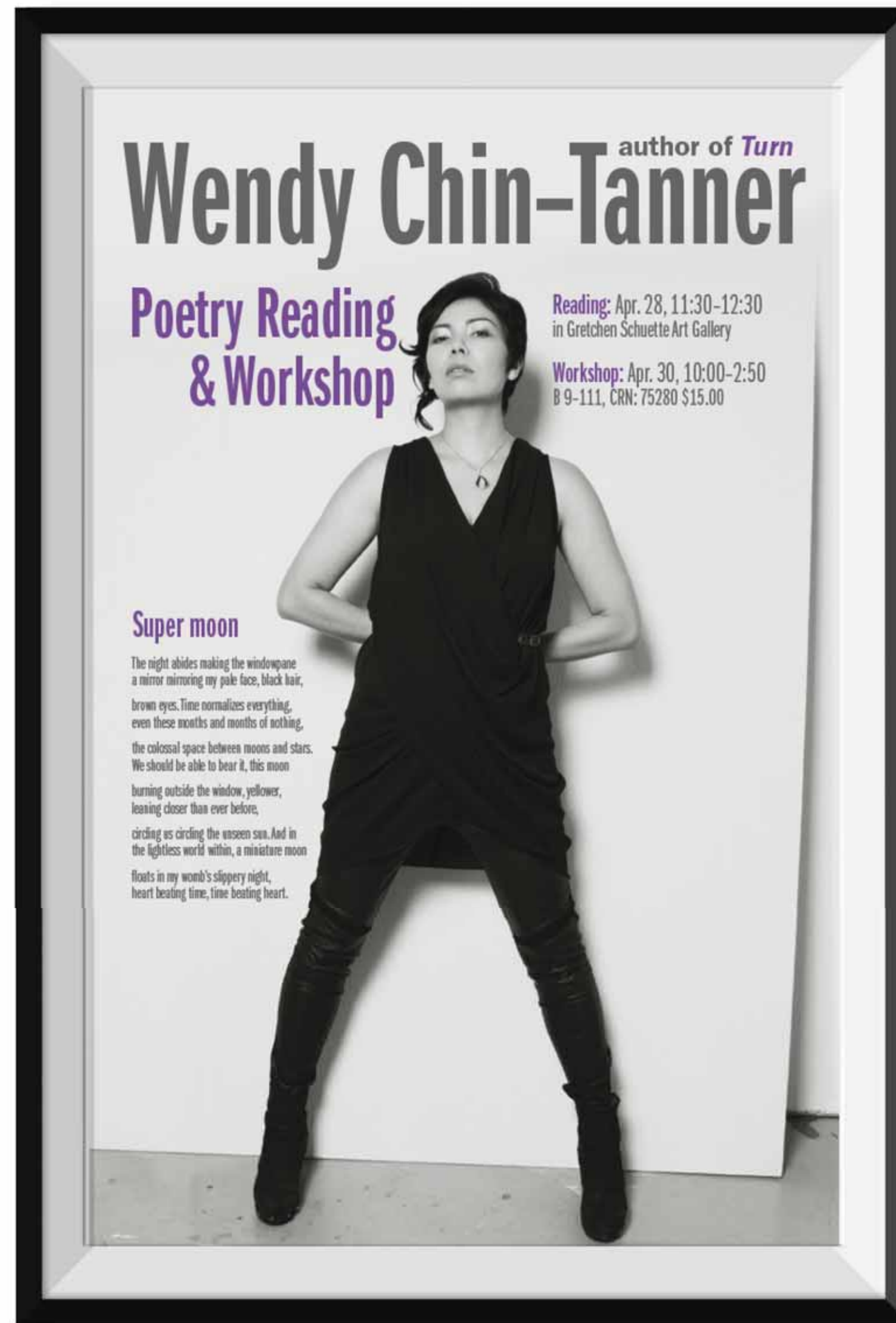
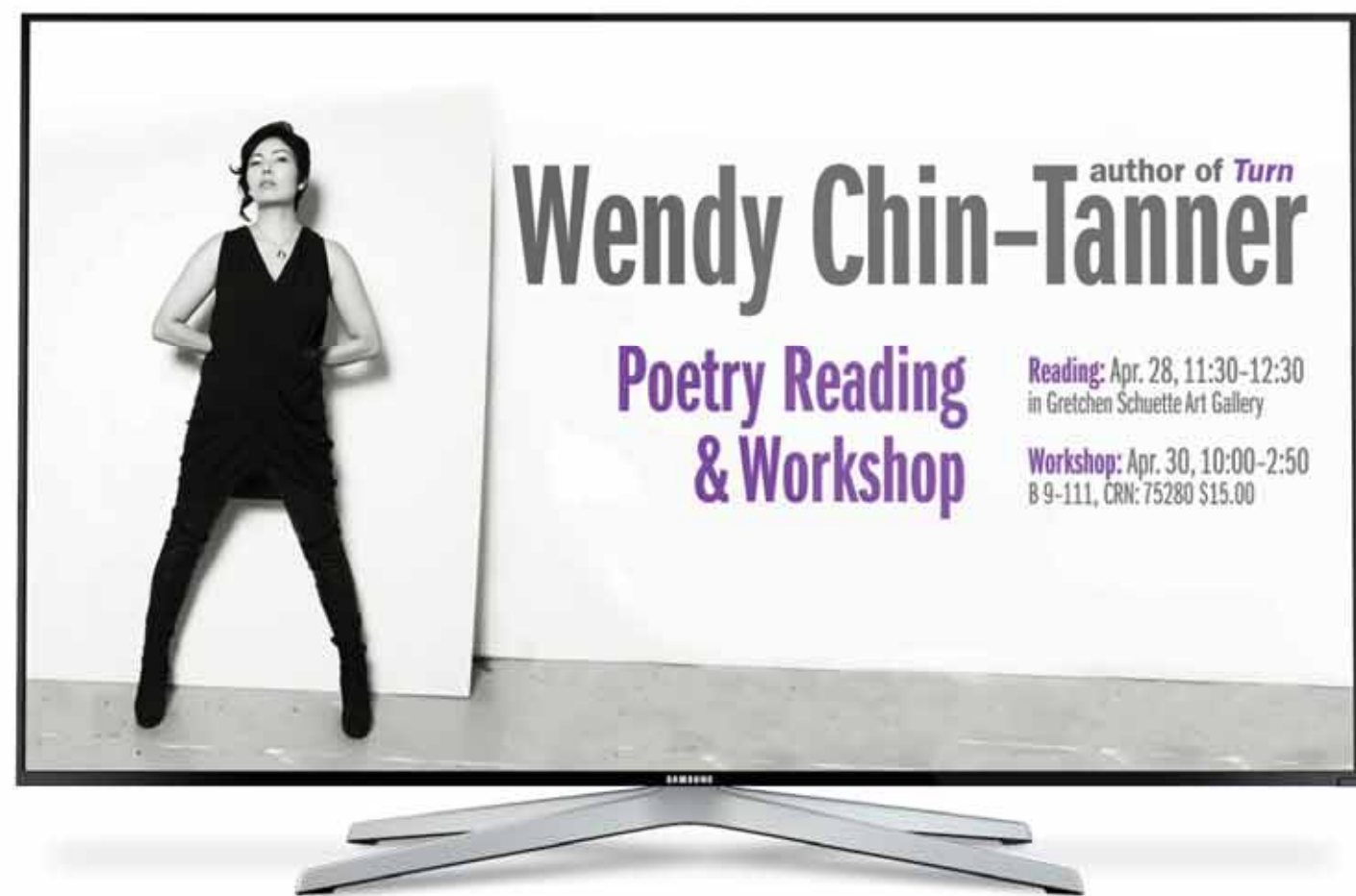


VALLEY ORCHARD

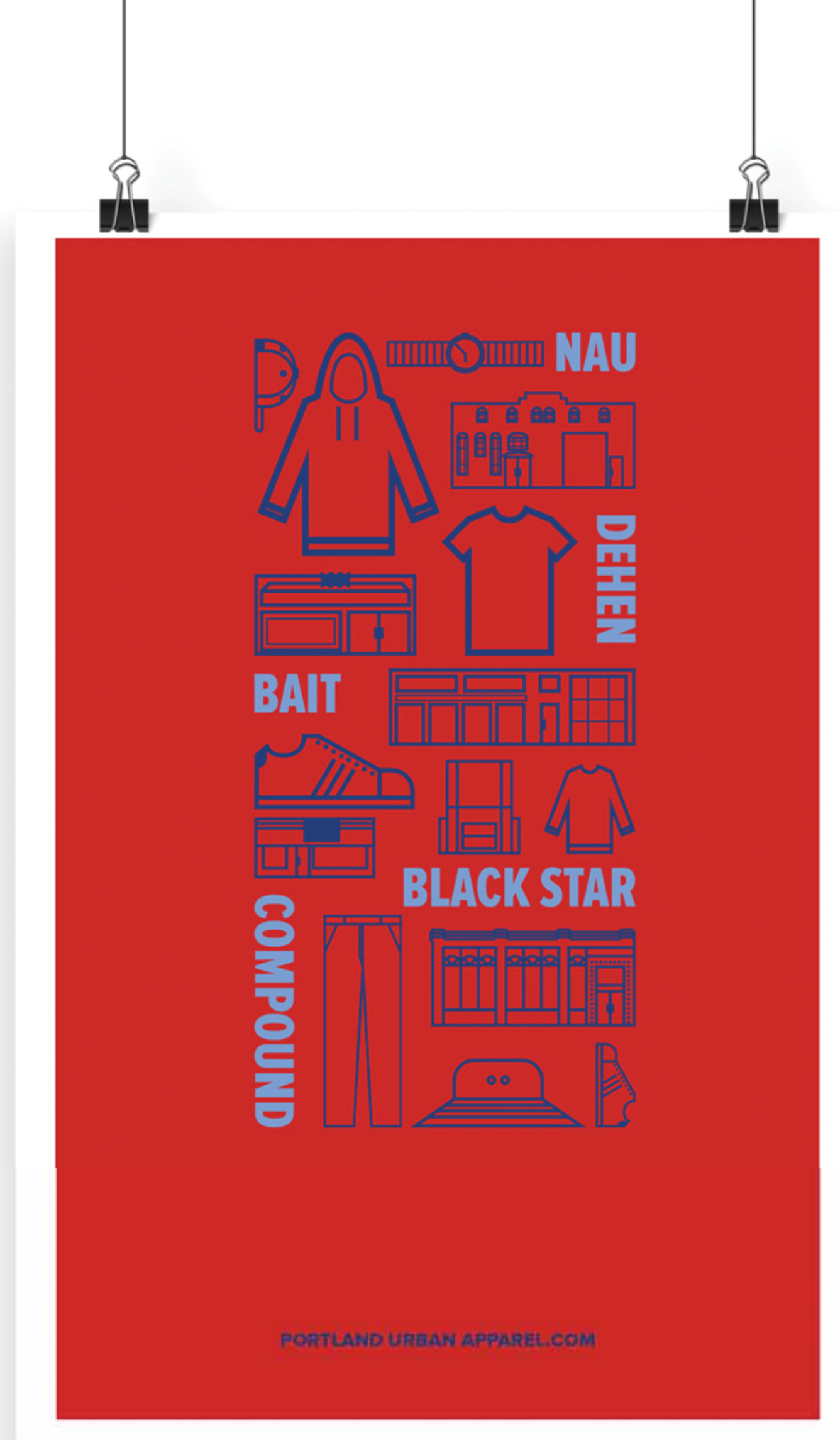
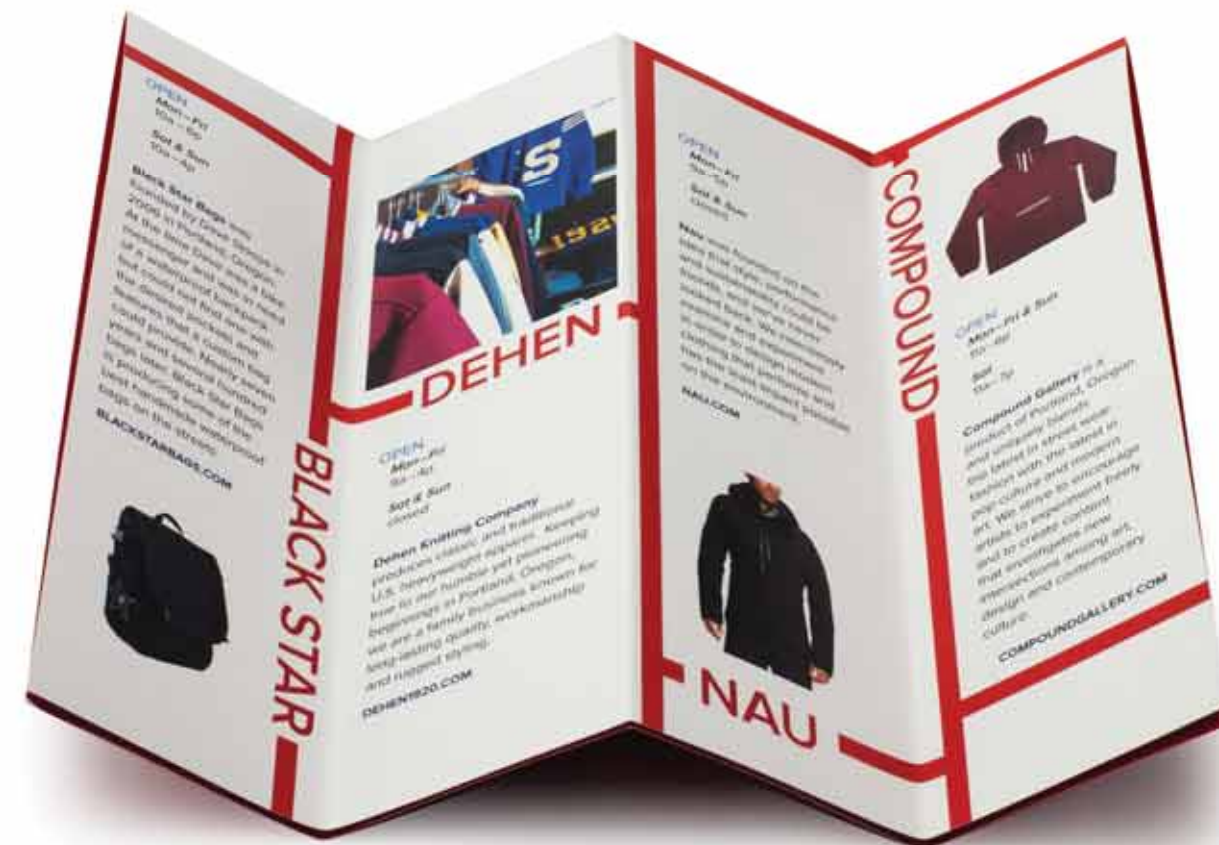




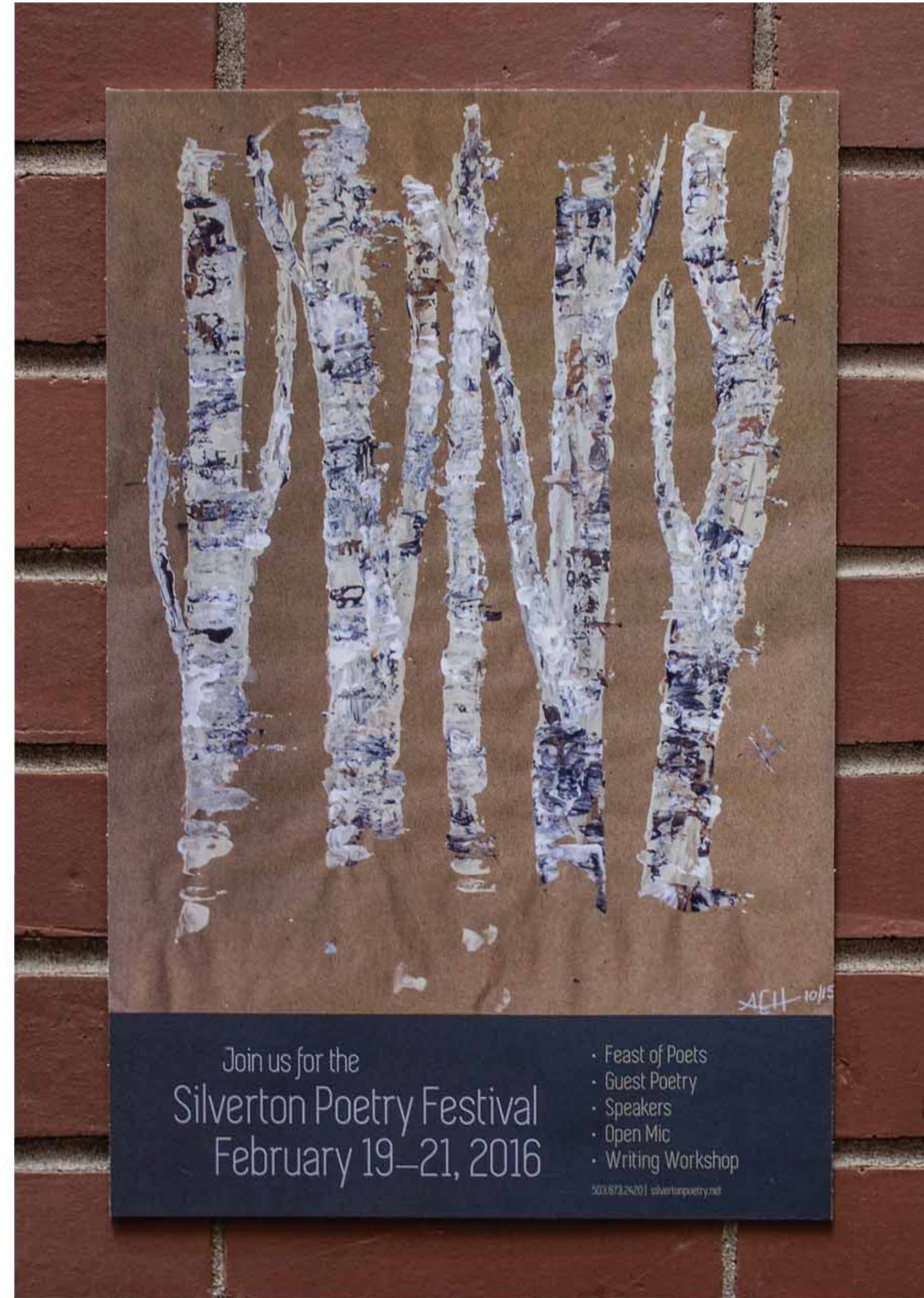
RAY.



RAY.



RAY.



Join us for the
Silverton Poetry Festival
February 19–21, 2016

- Feast of Poets
- Guest Poetry
- Speakers
- Open Mic
- Writing Workshop

503.872.2420 | silvertonpoetry.net



CITIZEN

June 2016

Ed. 3 Vol. 27

The Rise of the Sugar Industry: Turning chocolate coins to gold

The effect of
artificial sweeteners
on our bodies, the
economy, and farms

Nestle stopped in Hood River, Oregon Voters pass ban

Burt's Bees

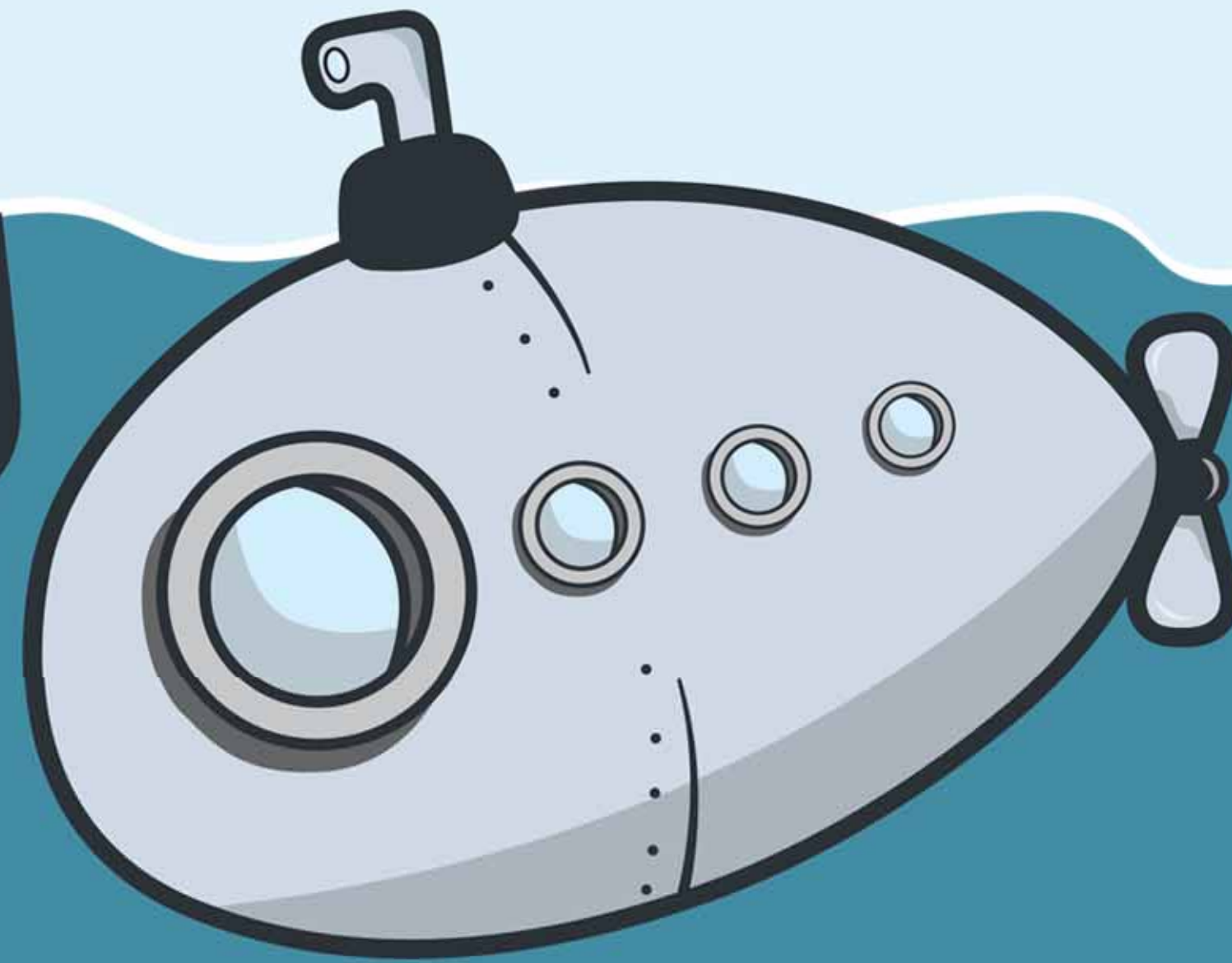
A last-ditch effort to save
the bees before it's too late

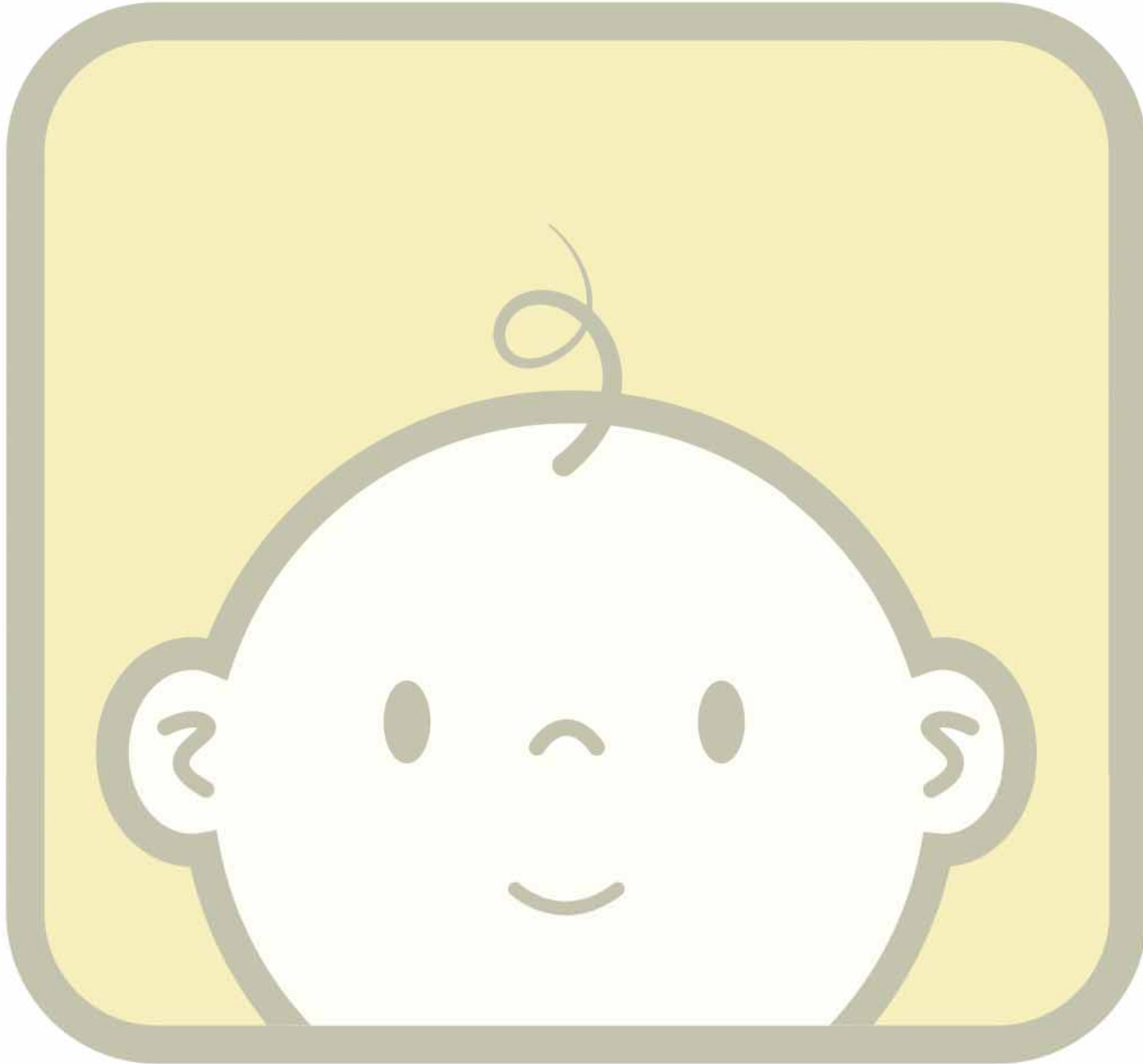




The Adventures of Marty

the Submarine

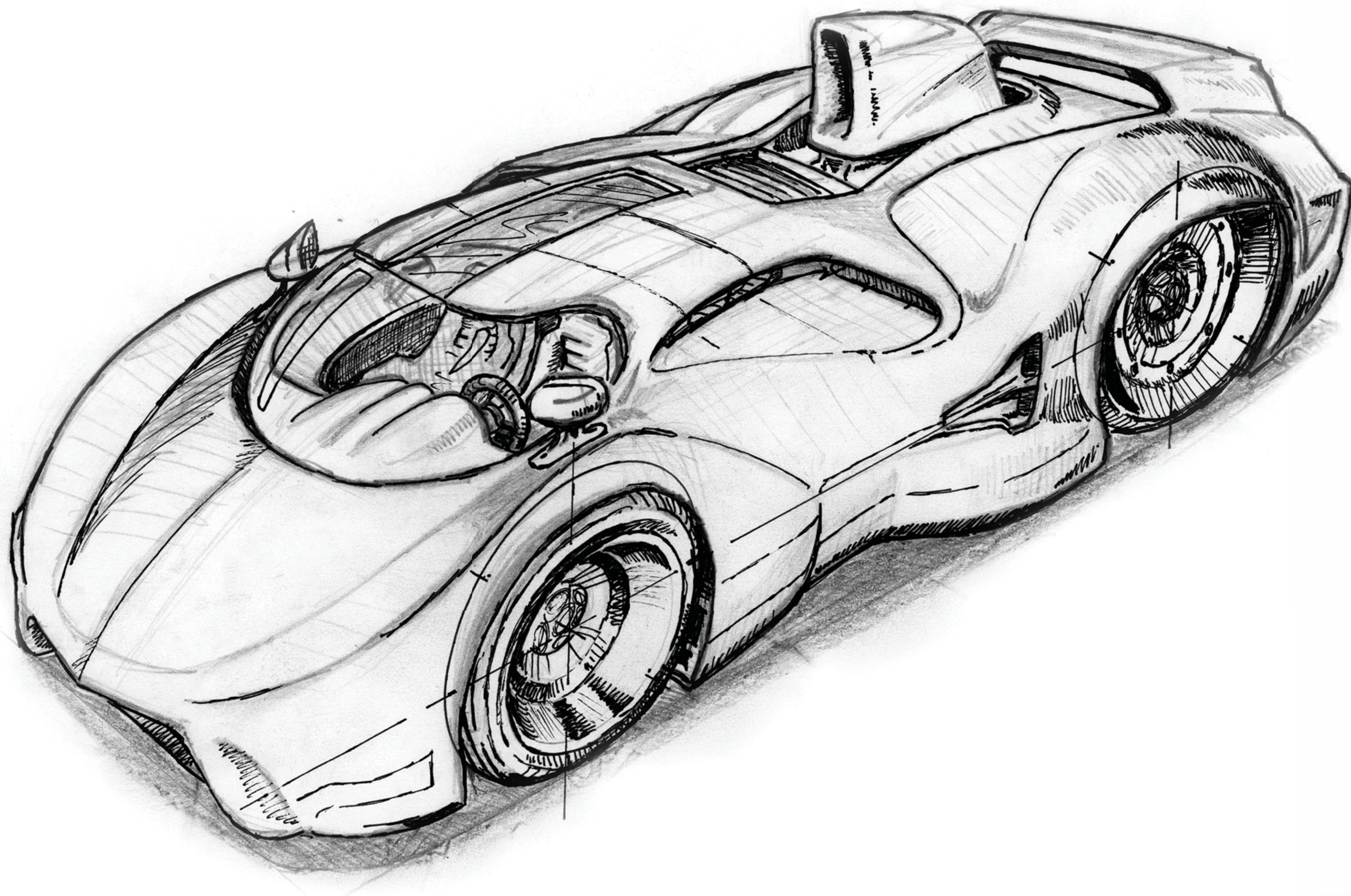




Baby IN A Box







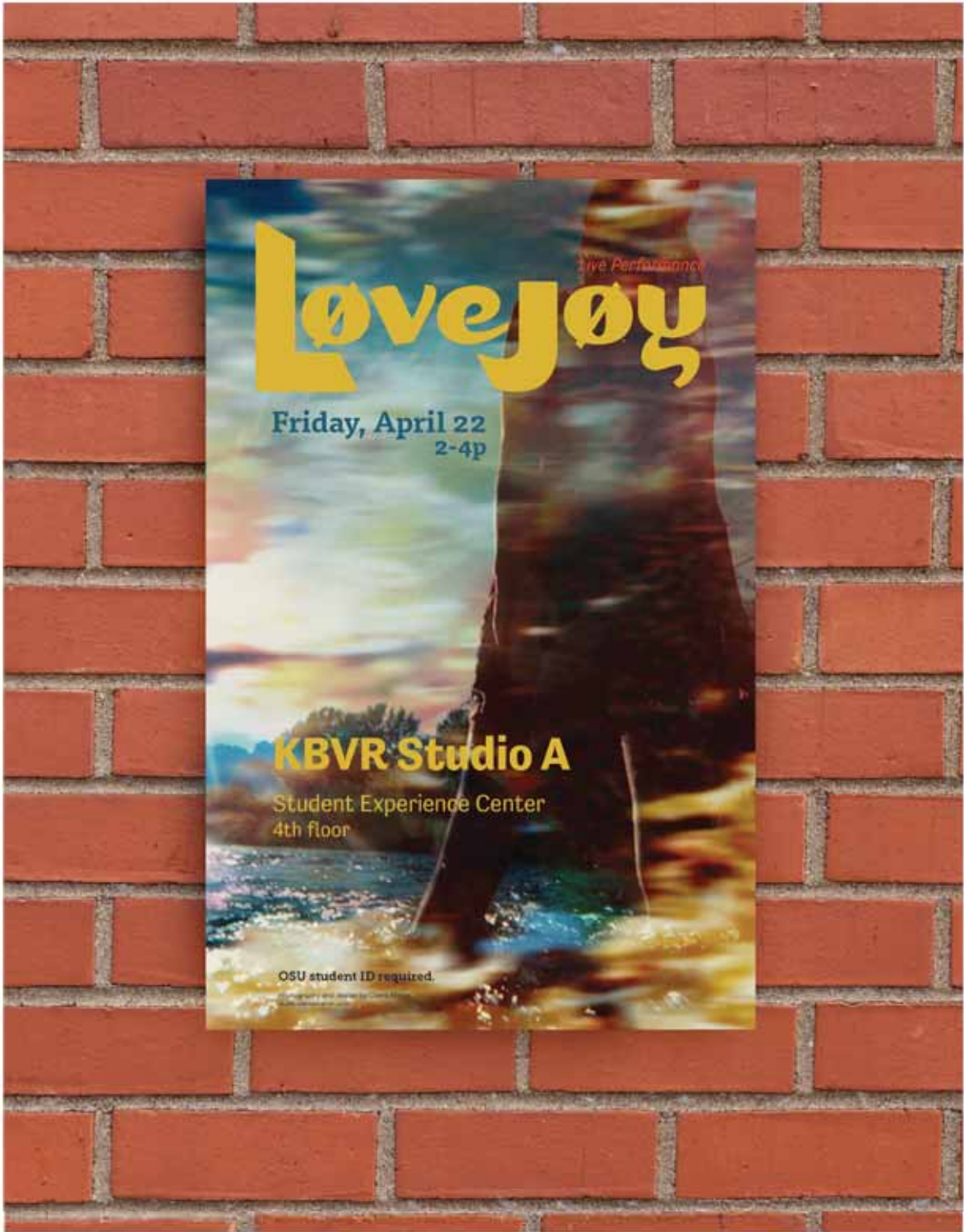
Dunk



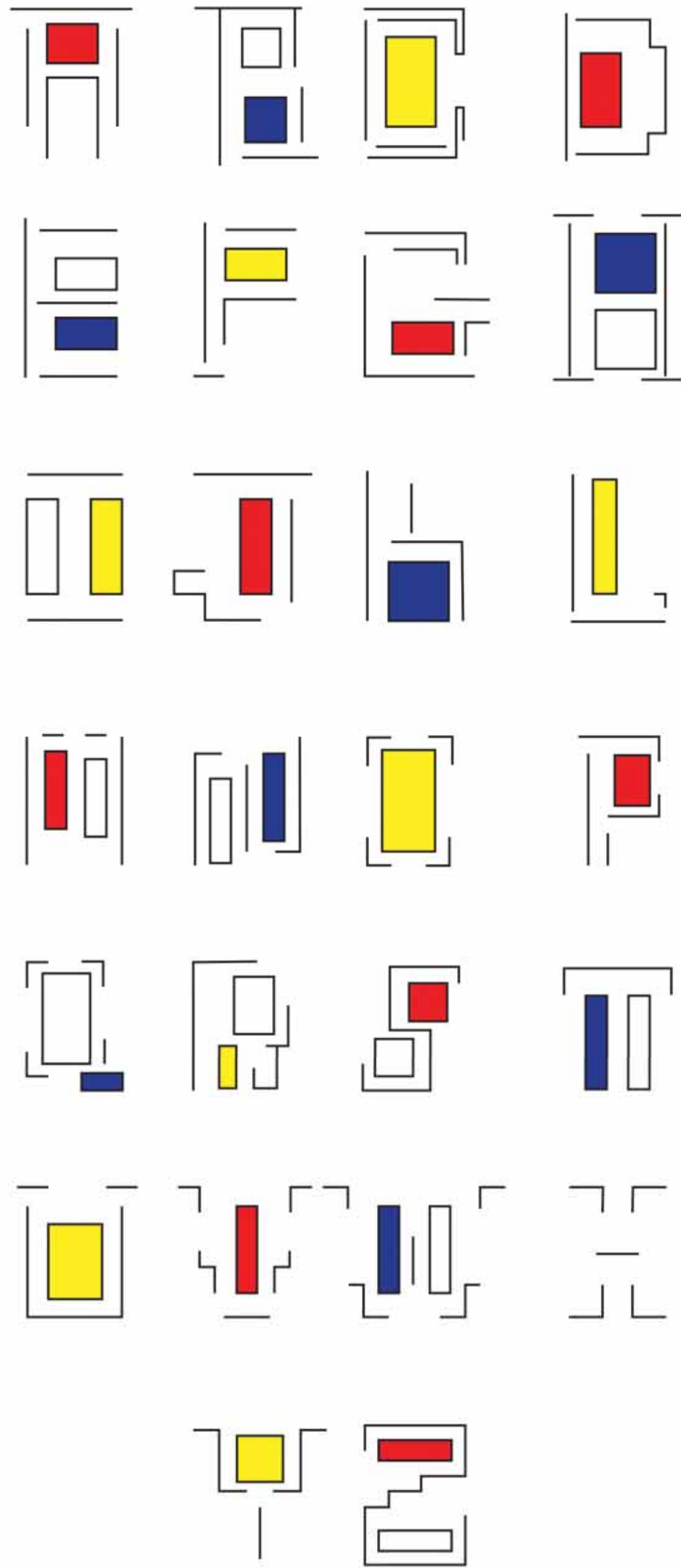
D. Bunk

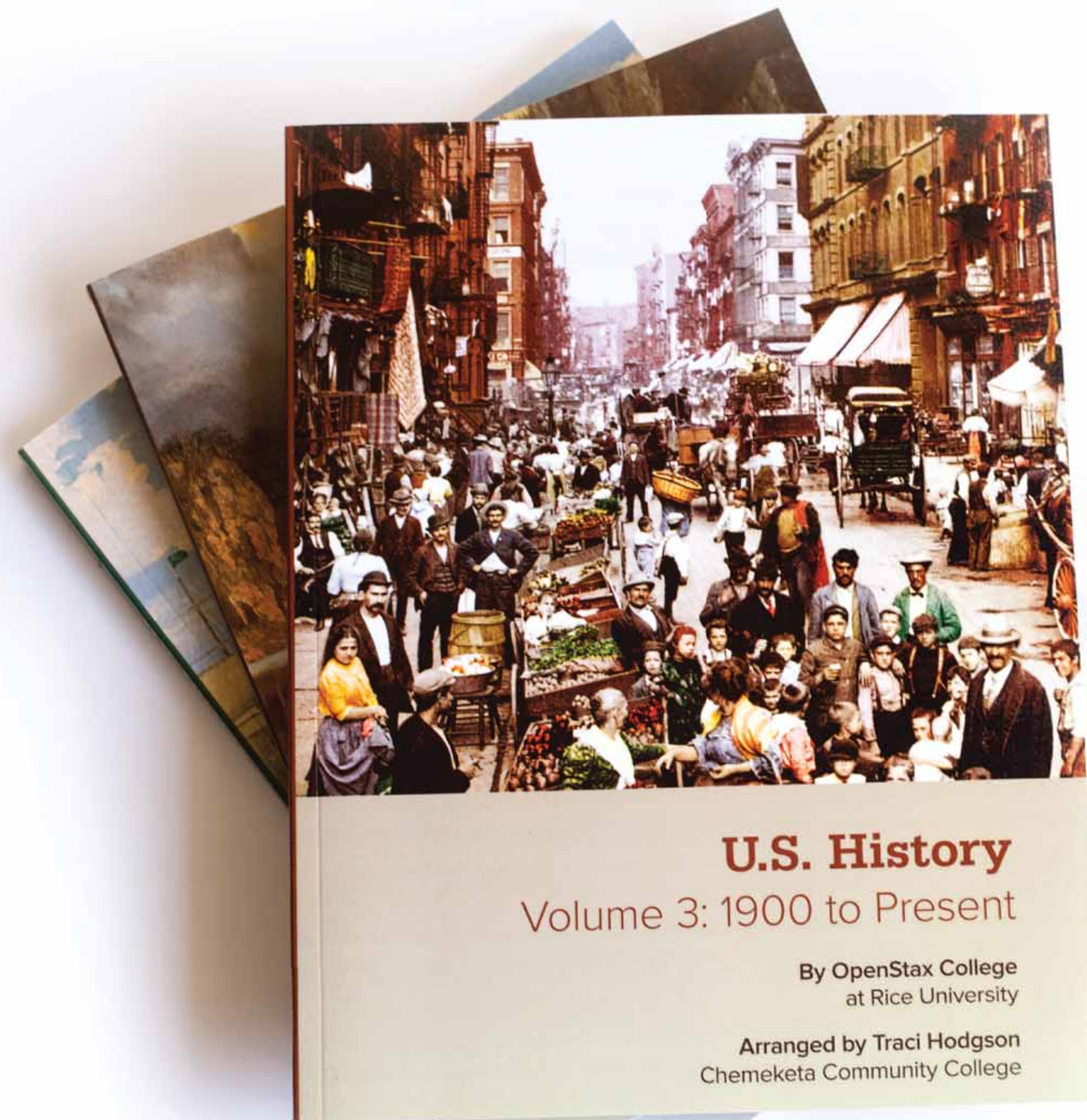
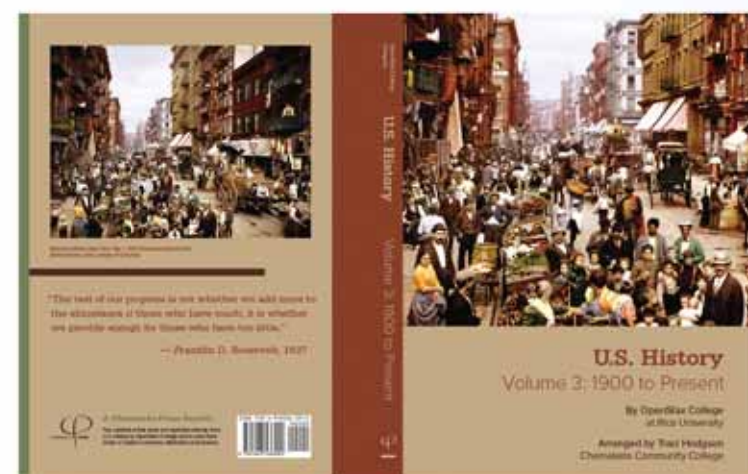
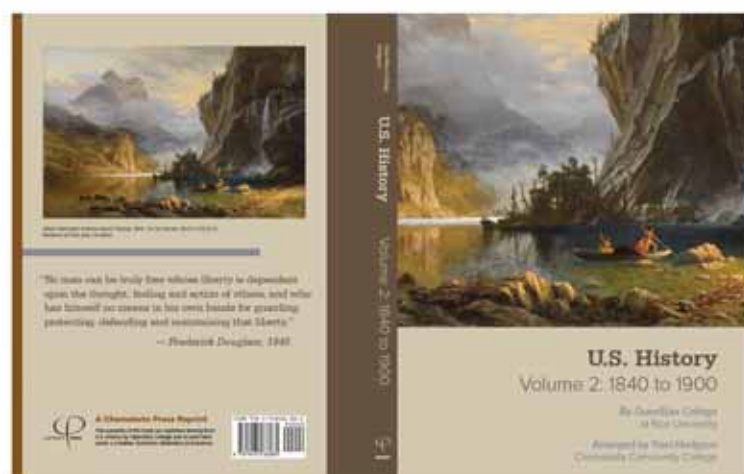
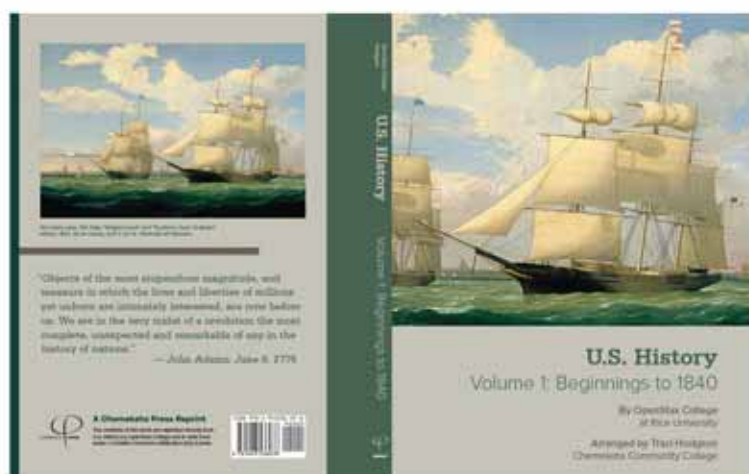
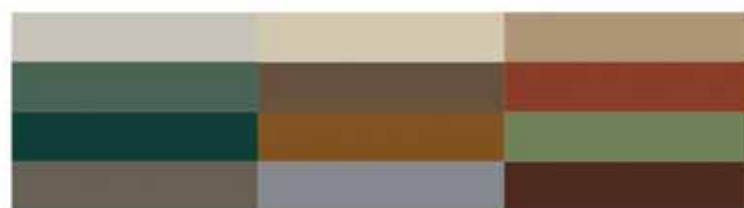


D. Bunk



Cierra Maher
CIERRA MAHER CREATIVE













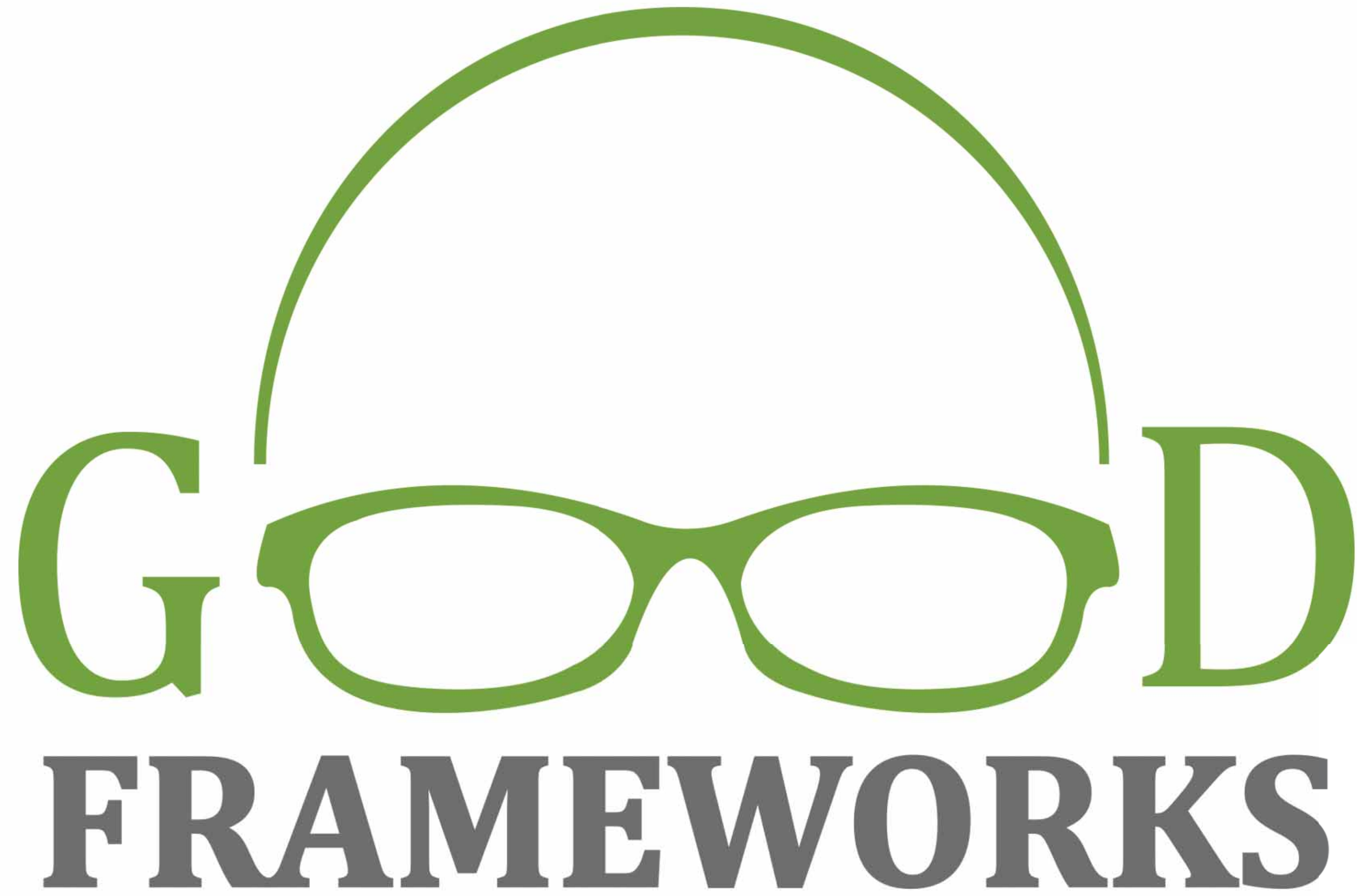
Happy Cup
Coffee

Red Olive

Pasta Company







Good FRAMEWORKS









